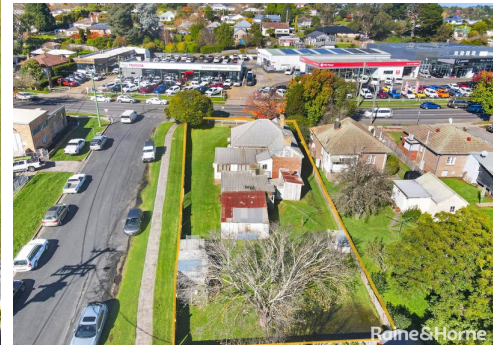


Detonate & Unlock The Development Potential



3



1



1

211 Argyle Street, Moss Vale

Price Guide \$850,000 to \$925,000

A magnificent opportunity to secure this prime parcel of land located in the Moss Vale CBD & future growth area.

This 879m2 corner block is zoned E3- Productivity Support with a height limit of 7.5 m & FSR of 0.7:1 & presents an opportunity for significant development subject to Council Approval.

The current residence is in original condition & is presently tenanted- this tenancy would be able to remain in place whilst Development Approval is being obtained.

Contact Team Anstee for further information or to arrange a private inspection:

Matthew Anstee

0400 555 088

Kristy Tuddenham

0448 555 054

Property ID: L27703165

Property Type: House

Garages: 1

Land Area: 879.0 sqm

Matthew Anstee

0400 555 088

matthew.anstee@sh.rh.com.au