



Comfortable. Practical. Phenomenal!



3



2



2

## 3/27 Brisbane Street, Oxley Park

Sold for \$675,000 (Jun 24, 2024)

Discover this charming three-bedroom townhouse, perfectly situated in a tranquil complex of just three homes. This property boasts an impressive 249sqm lot size, offering ample space and modern comforts for a convenient lifestyle.

### Features we love:

- **Versatility:** Enjoy a thoughtful layout with two bedrooms upstairs and one downstairs, providing the perfect layout for in-law accommodation, a home office, or even just an accessible bedroom for someone in need.
- **Comfort & Convenience:** The main bedroom features an ensuite, a walk-in wardrobe, and split-system air conditioning for your comfort. Both upstairs bedrooms are equipped with ceiling fans to ensure a pleasant atmosphere year-round.
- **Living Spaces:** The living area flows seamlessly into the dining space and on to the kitchen, and is enhanced by the air conditioning and access to the courtyard, creating a comfortable space to relax and entertain. A convenient downstairs toilet adds to the practicality of this home.
- **Practical Kitchen:** The well-appointed kitchen offers plenty of bench space and ample

<b>Property ID:</b>	L27048556
<b>Property Type:</b>	Townhouse
<b>Garages:</b>	1
<b>Carports:</b>	1
<b>Land Area:</b>	249.0 sqm

### Liam Hayes

0423678864

liam.hayes@stmarys.rh.com.au

cabinetry, making meal preparation a breeze.

- **Space for You:** At the top of the stairs, you'll find a versatile landing area, perfect for a small home office or reading nook.
- **Refreshed & Ready:** With new carpet & blinds throughout you'll feel at home right away.
- **The Outdoors:** Step outside to a huge courtyard, perfect for outdoor dining, gardening, or simply enjoying the fresh air. This townhouse is situated at the back of the complex, providing added privacy and a peaceful setting.
- **Parking:** The property includes a single garage with drive-through access to a carport, ensuring plenty of parking space for your vehicles.

Nestled in a small, quiet complex of only three homes, this townhouse offers a serene living environment while being conveniently located close to local amenities. Enjoy easy access to St Marys Train Station & Upcoming Sydney Metro. Close to schools, shops, and public transport, everything you need is right at your doorstep.

This spacious and unique three-bedroom townhouse offers the perfect blend of modern living and versatility. With its generous lot size, ample parking, and thoughtful layout, it presents an excellent opportunity for families, couples, or investors. Don't miss the chance to make this lovely townhouse your new home.

Contact Liam Hayes on 0423 678 864 or Jack Turner on 0434 554 430 for more information.

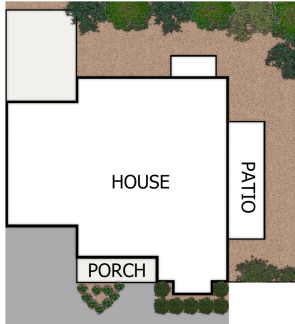
- All information contained herein is gathered from reliable sources, however we cannot guarantee its accuracy and all persons should rely on their own enquirers. Distances & amounts are approximate \*



3/27 Brisbane Street, Oxley Park

## FLOOR PLAN

### SITE PLAN



GROUND FLOOR



FIRST FLOOR

### DISCLAIMER:

This floor plan is used for marketing purpose only and is subject to errors and inaccuracy. The marketing Agent & N2 Media will not accept any liability. Interested parties should make and rely on their own enquiries.