



Simple, Modern Appeal in Top Location on 753m2 (Approx.)



4



1



1

42 Racecourse Road, Riddells Creek

Sold for \$560,000 (Jan 13, 2025)

Exuding country charm paired with modern simplicity, this four bedroom home has been designed for comfort and ease, blended with a premium location in a quiet street only a 2 min. drive to Riddells Creek shops, FoodWorks, restaurants, cafes, Riddells Creek primary school, and recreation reserve.

The home is perfectly presented on 753m2 (approx.) of tidy grounds. From its inviting entry alcove, the highly functional layout unfolds, boasting abundant natural light and a spacious feel throughout.

Generously sized living and dining areas are well serviced by the elegant kitchen showcasing black Caesarstone benchtops, white high gloss cabinetry, and a stainless steel oven/4-zone cooktop – with the laundry conveniently situated beside the kitchen.

The four bedrooms enjoy use of the central bathroom with a shower, bath, stone-topped vanity, and separate toilet. Also includes a carport, additional driveway parking, reverse cycle air conditioning, ducted heating, an electric wall panel heater, and good storage.

Just a 50 min. drive to Melbourne's CBD and a 35 min. drive to Melbourne Airport (approx.), surrounded by the natural wonders of the Macedon Ranges, this is a rare piece of paradise!

Property ID: L28212560

Property Type: House

Carports: 1

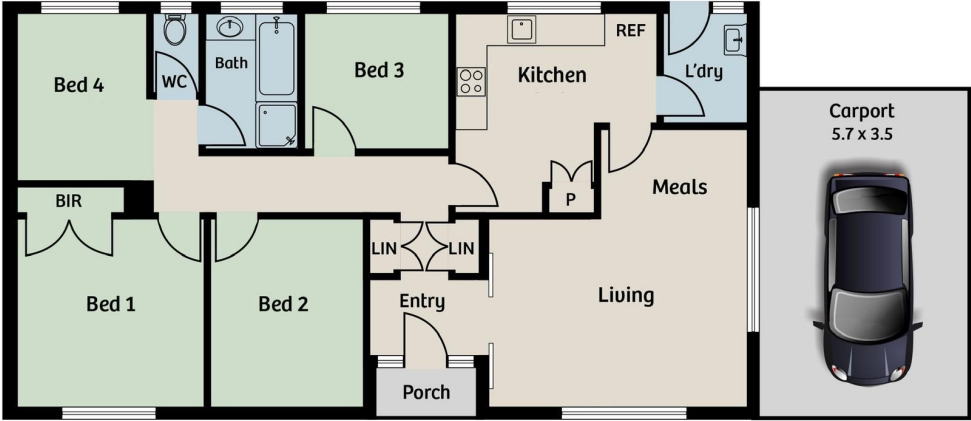
Land Area: 753.0 sqm

Amanda Burt

0431 204 265

amanda.burt@sunbury.rh.com.au

42 Racecourse Road Riddells Creek



Disclaimer: Floor plan, measurements and appliances are approximate and are for illustrative purposes only.
Please refer to draftsmans plans for accurate measurements.