



SOLD BY MARTIN POMEROY



2



1



1

16/37 Peninsular Drive, Surfers Paradise

Sold for \$555,000 (Jan 19, 2024)

Welcome to 16 Surfers Del Rey, where the distinctive layout offers multiple views of the Nerang River. Step into a space that embraces a low-maintenance lifestyle, allowing you to unwind on your balcony while soaking in the captivating river scenes. Situated in the heart of a charming riverfront boutique resort, Surfers Del Rey is just moments away from the vibrant city.

Key features of this property include:

- Spacious open-plan living area adorned with tiled flooring
- Modern kitchen equipped with ample storage
- Balcony with a picturesque view of the Nerang River
- Two generously-sized bedrooms with built-in wardrobes and glimpses of the river
- Well-maintained bathroom featuring a full bathtub
- Air conditioning and ceiling fans for added comfort

Property ID: L25055359

Property Type: Apartment

Garages: 1

- Scenic vistas of the surrounding waterways
- Secure complex with fob access throughout
- Underground parking included with the title
- Sold fully furnished

‘Surfers Del Rey’ apartments offer a resort-like experience, with the following amenities:

- A heated swimming pool and spa
- Riverfront barbecue area
- Private pontoon for residents

Disclaimer:

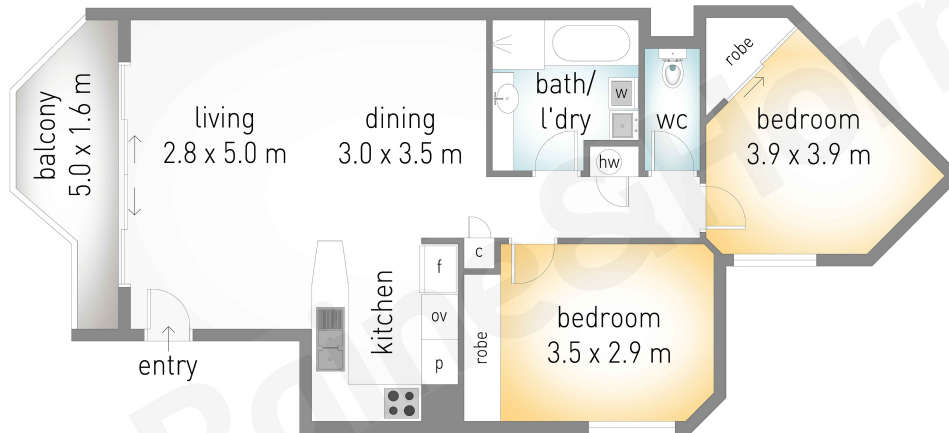
We have in preparing this information used our best endeavours to ensure that the information contained herein is true and accurate but accept no responsibility and disclaim all liability in respect of any errors, omissions, inaccuracy, or misstatements that may occur. Prospective purchases should make their own enquiries to verify the information contained herein.

16/37 Peninsula Drive, Surfers Paradise

2 1 1

internal: 67 m² | external: 6 m² | total: 73 m²

Raine & Horne
Martin Pomeroy 0421 845 444



Dimensions are approximate. All information contained herein is gathered from sources we believe to be reliable. However we cannot guarantee its accuracy and interested persons should rely on their own enquiries.