



Embrace Resort-Style Living at Minnippi Quarter



3



2



2

170/9 Ellen Street, Carina

Sold for \$900,000 (Sep 04, 2024)

Presenting 170/9 Ellen Street – an enchanting 3-bedroom townhouse nestled in the desirable Carina neighborhood. “Minnippi Quarter” offers a rare blend of luxury with vast green spaces, BBQ facilities, and convenient access to shops and transport, all set within tranquil surroundings.

This elegant property provides a high-end living experience with a modern, open-plan design that maximizes natural light. Premium features include ceiling fans, split system air-conditioning, a master bedroom with a fan, sunlit secondary bedrooms, a contemporary kitchen with a stainless steel gas cooktop, and a separate wet room-style bathroom. The double lockup garage, outdoor entertaining area, and access to a fully-equipped gym further enhance its appeal.

Location Highlights:

- 450m to Minnippi Parkland
- 700m to Bus Stop
- 2.2km to Carina Leagues Club

Property ID:	L27929354
Property Type:	Townhouse
Building / Floor Area:	182
Garages:	2

Nicole Cheung

0432 986 747

nicole.cheung@surfers.rh.com.au

- 2.3km to Carina State School
- 2.4km to Westfield Carindale
- 5.1km to Whites Hill State College
- 12km to CBD
- 18km to Airport

With limited affordable quality properties in Carina, this townhouse represents a golden opportunity for both first-time buyers and savvy investors. Embodying the pinnacle of Southside Brisbane real estate, it stands as a testament to the suburb's prestige and desirability.

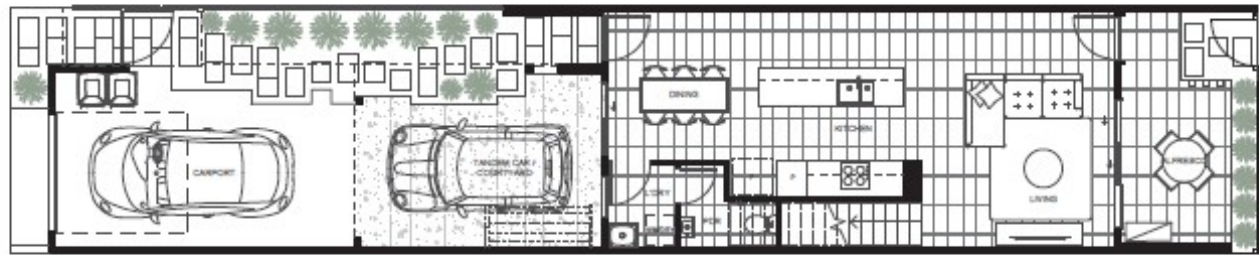
Mississippi Quarter offers a vibrant community, enjoy a coffee van every weekend within the estate, a dedicated dog wash station, and year-round community events. With this inclusive atmosphere, participate in Christmas parties, BBQs, Easter egg hunts, and Halloween trick-or-treating, fostering lasting connections with your neighbors.

Current lease:

\$800 per week until Feb 2025

Contact us today to schedule a viewing with Nicole Cheung at 0432 896 747 or nicole.cheung@surfers.rh.com.au.

MINNIPPI QUARTER



The dimensions, fittings and depictions of the layout of the house in this floorplan are for a typical G-Type dwelling at Minnippi Quarter, Carina and are approximations only, not to scale and may vary for each G-Type dwelling when built. The computer generated images of dwellings are indicative only. All individual room dimensions stated on this floorplan are measured from internal wall to internal wall. The overall internal and external area of the house is measured from the centre of the wall to the centre of the wall. All graphics, including site layout, landscaping, windows, screens, walls and the like are indicative only. Views of lot shown may include areas of common property and landscaping location and extent is indicative only. Prospective purchasers must rely on their own enquiries and the contract for sale. The information and images in this brochure are intended as a general introduction to Minnippi Quarter, Carina, and do not form an offer, guarantee or contract. Please note that while reasonable care is taken to ensure that the contents of this brochure are correct, this information is to be used as a guide only.