

Luxury Living in a Prime Location: Executive Top-Floor Apartment

Raine&Horne®



3



2



2

27/18-30 Sir Leslie Thiess Drive, Townsville City

Sold for \$575,000 (Jun 28, 2024)

Raine & Horne Townsville is proud to present this beautifully appointed apartment to the market.

Centrally located between the Casino/Entertainment Centre, The Strand, and the city, this property offers unparalleled convenience, with all amenities just a two-minute walk away. Nestled within a secure, gated complex, the residence features two resort-style pools, a spa, a BBQ and entertainment pavilion, and meticulously maintained gardens.

This top-floor apartment has recently been refreshed with a full repaint in modern, neutral colours, soft carpets, split-system air conditioning, and a new cooktop in the kitchen. The apartment boasts a fantastic aspect, overlooking the resort-style pools and breakwater.

As you enter, the open-plan living and dining area seamlessly flows through to a large patio with expansive glass doors. The generously sized kitchen, rare for an apartment, supports this space perfectly. The main bathroom is well-appointed and ideally positioned to serve the two generous rear bedrooms, both of which offer stunning marina and partial ocean views.

The master suite is situated at the front of the apartment and features his and hers robes, a large ensuite with a spa bathtub, and direct access to the balcony. The master bedroom is tiled for easy maintenance and luxury.

Property ID: L25660138

Property Type: Apartment

Building / Floor Area: 115

Garages: 1

Open Parking: 1

Land Area: 163.0 sqm

Steve Leumont

0499500032

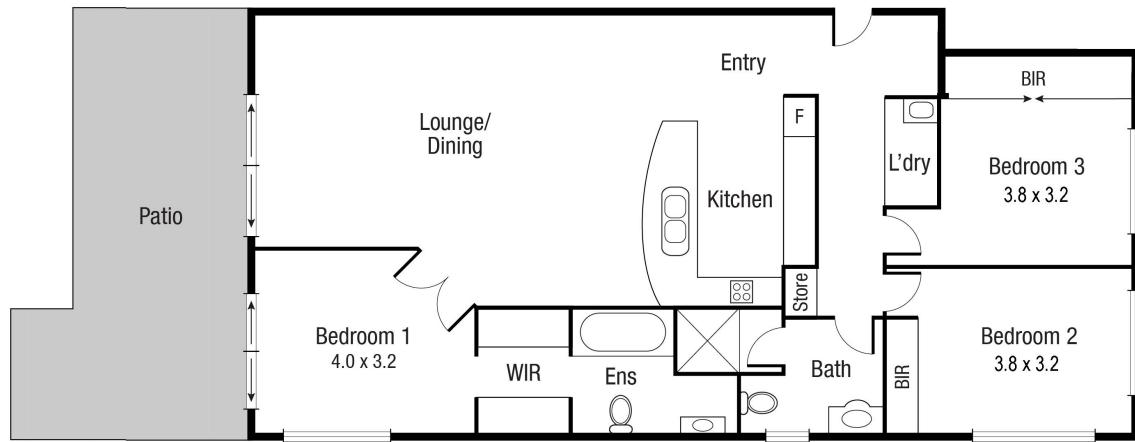
steve.leumont@townsville.rh.com.au

Additional features include ample internal storage, a cleverly concealed laundry with extra storage space, an exclusive secure garage with a remote roller door and a storeroom, and a second open parking space.

Key Features:

- Executive three-bedroom, two-bathroom unit on the top floor
- Fully air-conditioned
- Master suite with ensuite, spa bath, and walk-through robe
- Spacious tiled living areas
- Large gourmet kitchen with stainless steel appliances
- Oversized patio overlooking the resort-style pool
- Remote secure garage with storage plus an additional open parking space
- Secure complex with gated entry
- Resort-style amenities
- Minutes to the city center
- Walking distance to The Strand, ferry terminal, and The Ville Resort Casino

This apartment offers luxurious living in an unbeatable location. Contact Steve on 0499 500 032 or Jackie on 0428 462 451 today for your private inspection.



Scale in metres. Indicative only. Dimensions are approximate. All information contained herein is gathered from sources we believe to be reliable. However we cannot guarantee its accuracy and interested persons should rely on their own enquiries.

TOTAL AREA : 143.1 sq.m

24/18-30 Sir Leslie Thiess