



## 'Sunipol' A Spring & Autumn Wonderland



4



3



2

### 3 Greenvue Close, Ulladulla

Sold for \$1,900,000 (Dec 15, 2025)

From the moment you approach the circular driveway, surrounded by breathtaking gardens and expansive lawns, this meticulously maintained four-bedroom residence is nestled on 2.5 acres of serene landscaping. Offering peace and tranquillity just moments from both Ulladulla and Milton townships and just a stone's throw from vibrant Cupitts Estate and restaurant.

Step inside this immaculate home and discover a seamless blend of formal elegance and relaxed living. The gourmet kitchen, adorned with 40mm sleek stone benchtops, invites you in with its picturesque garden views from every angle.

Snuggle up by the slow-combustion fireplace in the family room or unwind beside the fireplace in the formal lounge during the cooler months, while ducted air conditioning keeps you cool and comfortable throughout summer.

The master suite beckons with a spacious walk-through robe and ensuite, opening onto a sun-drenched patio where you can bask in the beauty of your surroundings.

Outside, the property showcases a stunning array of mature indigenous and exotic flora, complemented by sprawling lawns and a tranquil Koi fishpond. Take time out with a book or entertain friends on the gorgeous hardwood deck, elevated and overlooking the backyard and gardens. Wander along winding walking trails that meander through native forest via

**Property ID:** L991641

**Property Type:** House

**Garages:** 2

**Land Area:** 2.5 acres

**Chay Benjamin**

0499851243

cbenjamin@mollymook.rh.com.au

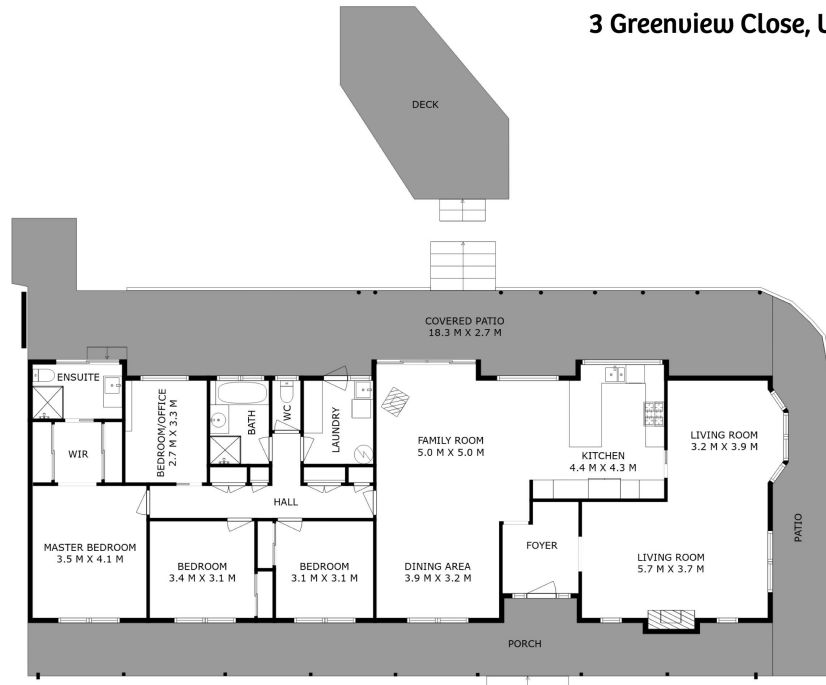
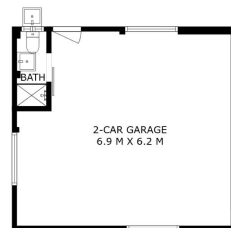
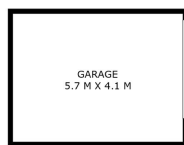
Japanese Torii gates or relax and enjoy gardening. There is even space for a pony, veggie patch, or charming chicken coup if your heart desires.

Ample storage is provided by a double garage with an additional bathroom, along with two sheds to accommodate all your tools and equipment. Whether you seek peaceful seclusion or a natural playground for the family, this idyllic property offers the perfect blend of rural serenity and modern comfort.

Additional features:

- Post and rail fence plus circular drive
- Plantation shutters throughout
- Ducted air conditioning to the living areas, reverse cycle air conditioning in the main bedroom
- Double hung windows and large sliding door
- New wool carpets
- Tile roof – re-coated and re-pointed

3 Greenvue Close, Ulladulla



Raine&Horne.

SIZES AND DIMENSIONS ARE APPROXIMATE, ACTUAL MAY VARY.

