



City Living At The Heart of Adelaide CBD



145/65 King William Street, Adelaide

Sold for \$425,000 (Jun 21, 2024)

Discover city living at its finest in this spacious 2-bedroom apartment located on the 14th floor of 65 King William Street, right in the heart of Adelaide. Boasting panoramic views and modern amenities, this property offers a prime lifestyle opportunity.

Step inside to find two generously sized bedrooms, both equipped with air conditioning for year-round comfort. The apartment features a big laundry area, providing convenience for everyday living.

This apartment is ideal for working professional, rental investment and ideally suits students studying at the nearby city university or TAFE campuses, given its perfect location in the heart of Adelaide. Currently tenanted to international students studying in the University leased, rented at \$600 per week.

The highlight of this residence is the balcony overlooking the famous King William Street, offering stunning vistas of the bustling city below. The ample dining area and living room provide plenty of space for relaxation and entertaining guests.

Situated opposite Adelaide's most popular shopping precinct, Rundle Mall, residents enjoy unparalleled access to an array of retail, dining, and entertainment options right at their doorstep.

Property ID: L27394304

Property Type: Apartment

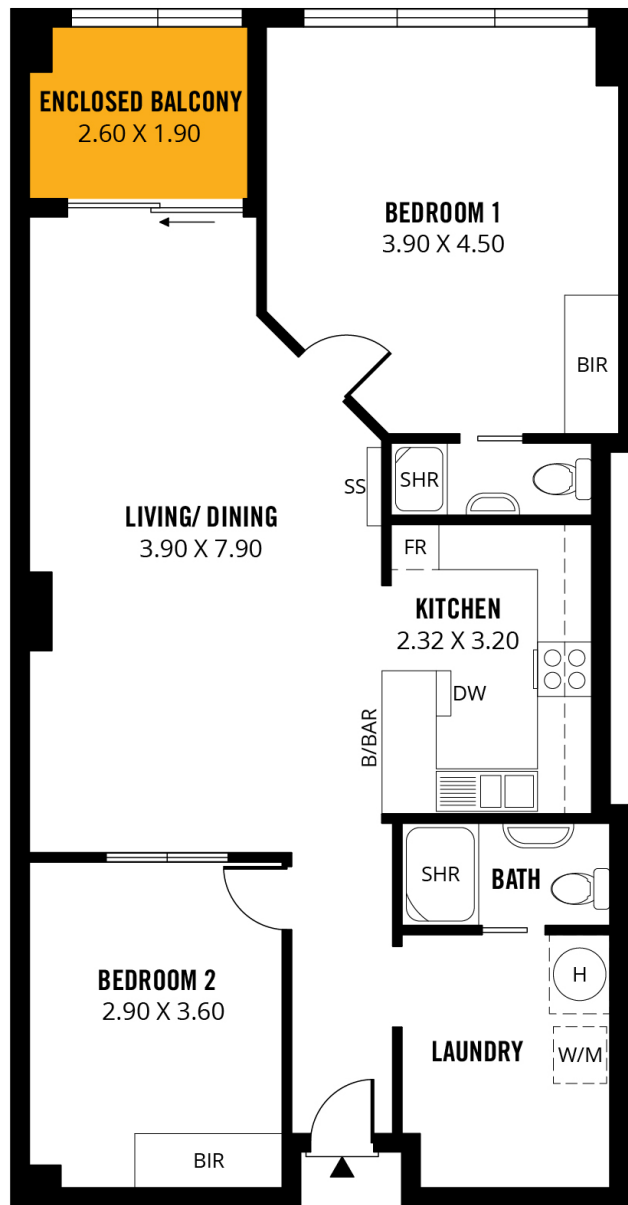
Soe Wang

0410 411 090

soe.wang@unley.rh.com.au

Don't miss this opportunity to own a piece of city living in a vibrant and central location. Contact us today to arrange a private inspection and envision yourself enjoying the best of Adelaide's cosmopolitan lifestyle from this exceptional apartment.

*Disclaimer: Neither the agent nor the seller accepts any responsibility for any errors or omissions in this advertisement. Any potential purchaser should not rely solely on third-party information providers to confirm property or land details and is advised to check directly with the agent to review the title deeds and local authority details and provide a full Form 1 Vendor's Statement.



TOTAL



Living



Enclosed
Balcony



Scale in metres. This drawing is for illustration purposes only. All measurements are approximate and details intended to be relied upon should be independently verified. Produced by **The Fotobase Group**