



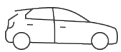
Stunning Four-Bedroom Home with Dual
Ensuites: Luxury Living in a Prime
Location



4



3



4

52A Shirley Avenue, Felixstow

Sold for \$1,840,000 (Oct 16, 2024)

Stunning Four-Bedroom Home with Dual Ensuites: Luxury Living in a Prime Location

Experience modern luxury in this architecturally crafted masterpiece, completed in December 2023. This exceptional residence, featuring four bedrooms with dual master ensuite bathrooms, seamlessly combines premium design, flawless craftsmanship, and an enviable location.

The contemporary allure of this dual-level property is evident from its breathtaking façade and elegant balcony. The spacious driveway leads to a double remote lockup garage, while a charming front porch invites you to explore its interior wonders. Upon entry, lofty ceilings create a sense of airiness, complemented by elegant tiled flooring throughout.

Key Features:

Open-Plan Living: The expansive living, dining, and kitchen area serves as the heart of the home.

Chef's Kitchen: Equipped with 900mm high-end stainless steel cooking appliances, a dishwasher, luxurious 40mm waterfall stone benchtops, and a convenient butler's pantry with organized cabinetry.

Property ID: L28119279

Property Type: House

Building / Floor Area: 350

Garages: 2

Open Parking: 2

Land Area: 407.0 sqm

Vincent Law

0433 221 994

vincent.law@unley.rh.com.au

Outdoor Alfresco: Step outside through sliding glass doors to a covered alfresco area, perfect for year-round enjoyment and entertaining, overlooking the lush, low-maintenance backyard.

Guest Ensuite: A downstairs guest ensuite (or second master) features a sparkling ensuite bathroom with quality tiles, a toilet, and a shower.

Additional Amenities: Includes a laundry, powder room, storage room, and a spacious formal lounge or study.

Ascend the solid timber staircase to the upper level, greeted by a gorgeous chandelier. The upper level houses three spacious bedrooms, including a master suite with a walk-in robe and an ensuite featuring a twin vanity. The other two bedrooms offer built-in robes.

Additional Features:

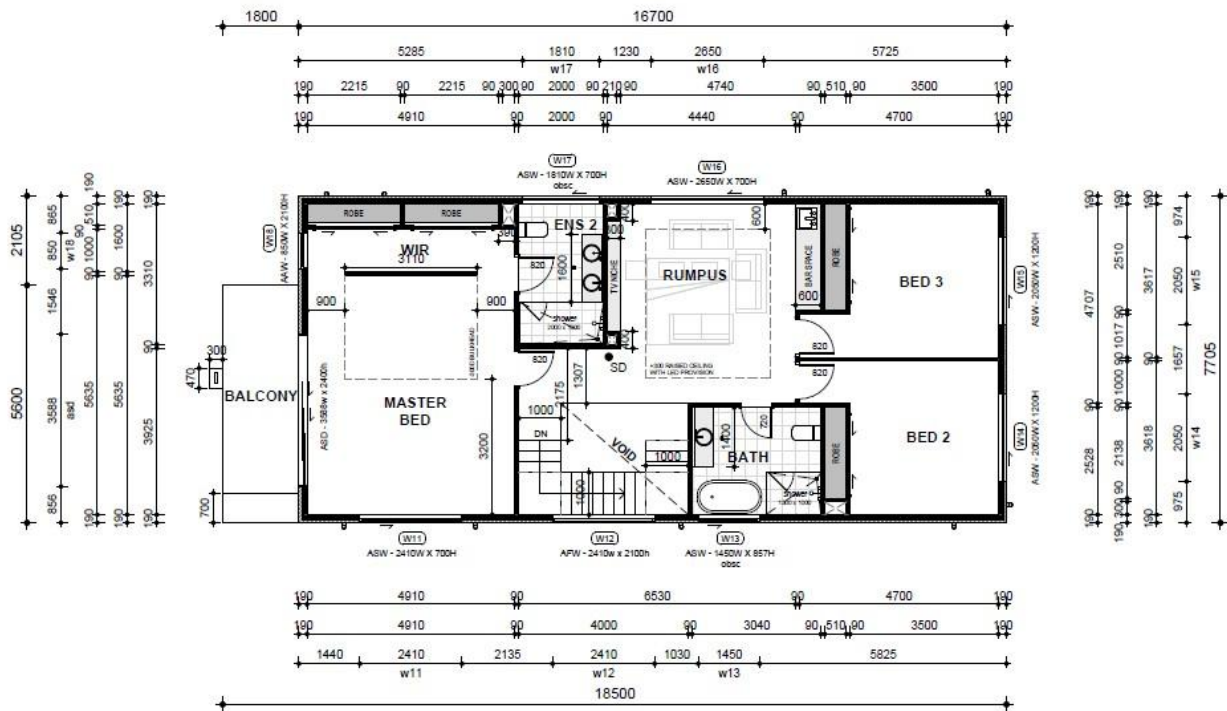
13.2KW Solar System: A bonus for today's utility costs.

Security: Equipped with a security alarm system for peace of mind.

Climate Control: Remote-controlled ducted reverse cycle air conditioning for year-round comfort.

Sitting on a 407 square meter block and offering 347 square meters of living space, this residence enjoys a desirable location near Marden Shopping Centre, Felixstow Reserve, amenities, and public transport options. It is zoned to East Marden Primary and Charles Campbell College.

Don't miss the opportunity to experience the charm and elegance of this exceptional home. Schedule your viewing today!



1 | Level 1 Floor Plan

SCALE: 1 : 100