



Dual Street Access: Solid Brick & Tile



3



1



1

54 Coachwood Crescent, Bradbury

Auctioned for \$920,000 (Jun 29, 2024)

This highset, solidly build brick and tile home is perfectly positioned on a 613m2 corner block to maximise elevation, northerly outlook, breezes, and natural light; with two driveways and dual street access and frontage, there's plenty of onsite parking space and access for all the big boys' and girls' toys

In comfortable, liveable condition 'as is' – there is plenty of potential to renovate to suit personal tastes or property flip for profit; plus, there is DA approval for a granny flat onsite.

Summary of features:

- 4 generous size bedrooms with built-ins and ceiling fans
- Retro bathroom with shower over bath, separate toilet
- Central kitchen with stainless steel appliances including dishwasher
- North facing porch at entry with elevated area views
- Rear covered patio leading to grassy fenced backyard

Property ID: L28031679

Property Type: House

Garages: 1

Land Area: 613.0 sqm

Jack Cailotto

0452227023

jack.cailotto@wetherillpark.rh.com.au

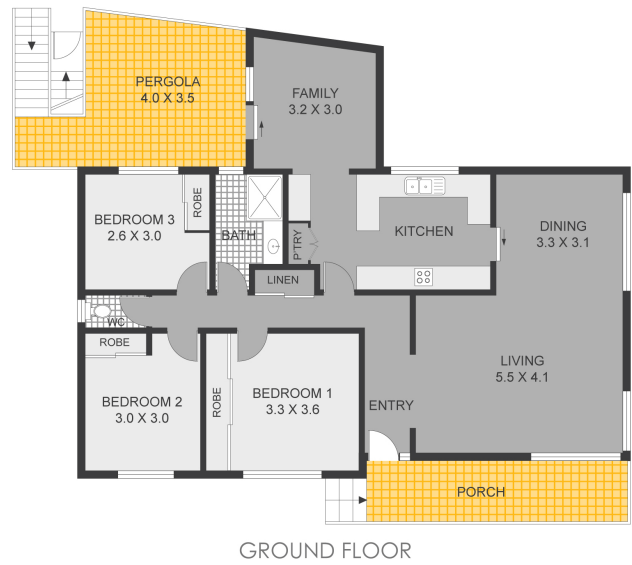
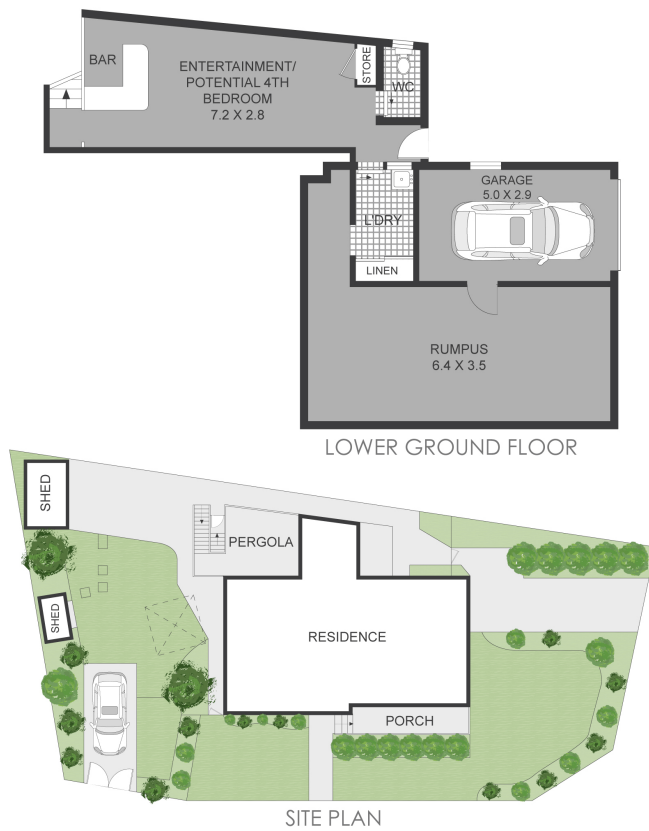
- Masses of multipurpose space under, including laundry & 2nd toilet
- Single lock-up garage and gated side access from Caley Rd
- Ducted air-conditioning throughout and 1 x split system
- Generous storage under plus 2 x lock up garden sheds
- Room for a pool, good backyard for children & pets
- Walk to multiple schools, bus, shops, parks/reserves
- Short drive to golf, hospital, and university campus
- Sought-after location, convenient & family-friendly
- DA Approval for a granny flat with separate street access and parking.

This is a home with good bones, a big heart, and plenty of living spaces across both levels to be utilised for various purposes; with a little TLC and reimagining it could be transformed to be your forever home just the way you like it – this is an exciting opportunity in an ultra-convenient location that will always be in strong demand.

Council Rates: \$422.40 per quarter (approx)

Water rates: \$171.63 per quarter (approx)

Disclaimer: The above information has been provided to us from the vendor. We cannot guarantee the accuracy of this information and as such the information provided is not a representation by us as to the accuracy of the statement. You should rely on your own enquiries and judgment to determine the accuracy of this information to satisfy yourself of the true position. Images are for illustrative purposes only and do not represent the final product or finishes or scale.



BRADBURY

54 COACHWOOD CIRCUIT

DISCLAIMER: Plans shown are for presentation purposes only and are not part of any legal document or title. They are subject to errors, omissions, inaccuracies and should not be used as a sole and accurate reference. Interested parties should make their own inquiries using independent sources.