

3 PRIME LOTS @ 405m2 = 1215m2 - 128 & 130 Kingsley Terrace Manly



3



1



3

128 & 130 Kingsley Terrace, Manly

Sold for \$2,840,000 (Sep 06, 2024)

WHERE IN MANLY CAN YOU FIND

1. 3 BLOCKS OF LAND TO DEVELOP – 128 & 130 KINGSLEY TERRACE on corner of NELSON PARADE, MANLY

OR

2. SECOND OPTION – 2 BLOCKS @ 130 KINGSLEY TERRACE on corner of NELSON PARADE, MANLY

ACT NOW – Contact Margaret or Chris to arrange your time to discuss and view the properties before it is too late!

This is a rare opportunity to purchase a large 1215sqm (approx) block on a popular Terrace in Manly. The block offers 2 street frontages and a total of 3 lots over 2 properties.

128 Kingsley is a single block on its own Title, while 128a & 130 Kingsley is a double block on 1 Title with an original Queenslander home.

The original home on 130 Kingsley Terrace was built by local legend William Gunn and was a

Property ID: L26850884

Property Type: Other

Garages: 3

Land Area: 1215.0 sqm

Margaret Vote

0411 521 747

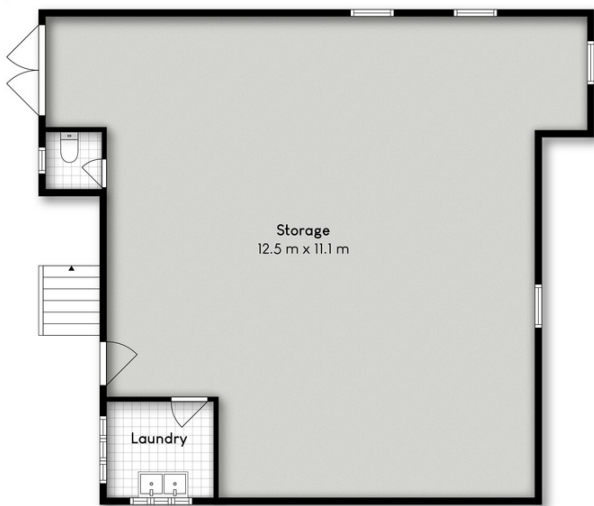
margaret.vote@wynnum.rh.com.au

local land mark.

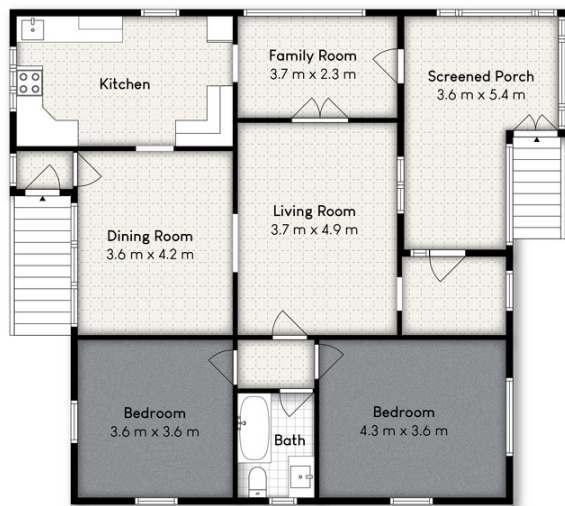
For those who see the parcel of land as more valuable for development, there is no Character overlay on this property allowing the home to be removed.

The elevated position on Kingsley Terrace & Nelson Parade is excellent and ideal for building, with panoramic bay views obtained towards the William Gunn Jetty & Manly Boat Harbour.

NORTH
▲



Floor 1



Floor 2

128-130 KINGSLEY TERRACE, MANLY

2 1 1

Whilst every attempt has been made to ensure the accuracy of the floor plan contained here, measurements of doors, windows, rooms and any other item are approximate and no responsibility is taken for any error, omission, or misstatement. This plan is for illustrative purposes only and should only be used as such by any prospective purchaser.

